

MONTHLY MEMBERSHIP PROGRESS REPORT

District 18 N

Results as of: 11/30/2023

GMT:

LOCATION GEORGIA

GMT CA

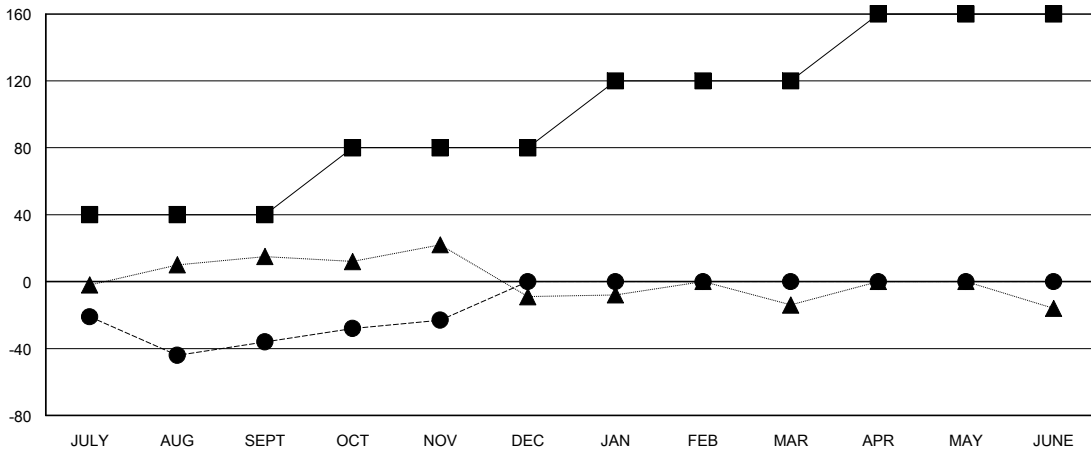
| Clubs | | | |
|-----------------------|---------------|-----------|---------------|
| RESULTS FOR 2023-2024 | | | |
| QUARTER | NEW CLUB GOAL | NEW CLUBS | DROPPED CLUBS |
| JULY/AUG/SEPT | 0 | 0 | 2 |
| OCT/NOV/DEC | 1 | 0 | 0 |
| JAN/FEB/MAR | 0 | 0 | 0 |
| APR/MAY/JUNE | 0 | 0 | 0 |

| Members | | | |
|-----------------------|------------------------|----------------------|--|
| RESULTS FOR 2023-2024 | | | |
| QUARTER | MEMBER GROWTH NET GOAL | MEMBER GROWTH ACTUAL | DROPPED MEMBERS ACTUAL (including transfers) |
| JULY/AUG/SEPT | 40 | 29 | 65 |
| OCT/NOV/DEC | 40 | 31 | 17 |
| JAN/FEB/MAR | 40 | 0 | 0 |
| APR/MAY/JUNE | 40 | 0 | 0 |

GOALS AND ACTUAL NEW CLUBS CUMULATIVE



GOALS AND ACTUAL MEMBERS CUMULATIVE



| | | | |
|-------------------------|--|---|------------------------------------|
| DROPPED CLUBS: 2 | 18 CLUBS OF 51 ADDED 1 OR MORE NEW MEMBERS | GENDER DISTRIBUTION | |
| | | MALE 691 (62.53%) | FEMALE 414 (37.47%) |
| DROPPED MEMBERS | | CLICK HERE FOR CUMULATIVE MEMBERSHIP DATA | TOTAL FAMILY UNIT MEMBERS 192 |
| DECEASED 10 | CLUB CANCELLED 0 | | FAMILY MEMBERS PAYING HALF DUES 98 |
| OTHER 72 | TOTAL 82 | | |